



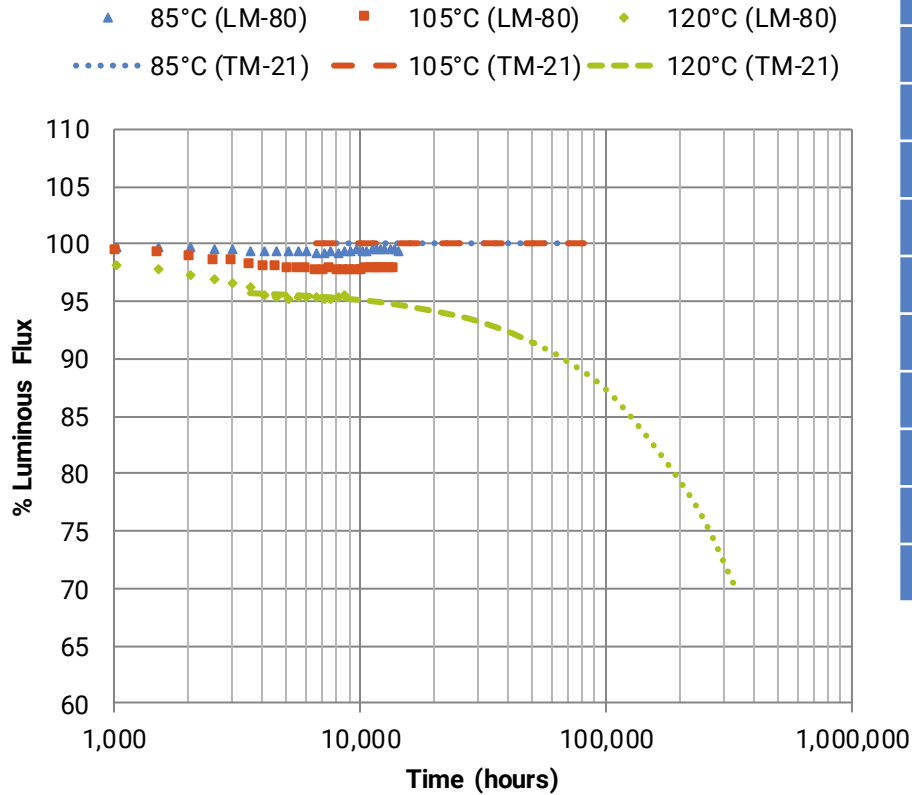
XLAMP XP-G3 WHITE

LONG TERM TESTING SUMMARY :: Nov 15, 2017

XLamp XP-G3 LM-80 Testing Summary

Current (A)	Tsp (°C)	Reported Lifetime (hrs)		Tested CCT
		L70	L90	
0.350	85	>84.7k	>84.7k	3000K
0.350	105	>81.6k	>81.6k	3000K
0.350	120	>51.4k	>51.4k	3000K
0.700	85	>84.7k	>84.7k	3000K
0.700	105	>75.6k	>75.6k	3000K
0.700	120	>51.4k	39.6k	3000K
1.050	85	>84.7k	>84.7k	3000K
1.050	105	>48.4k	>48.4k	3000K
1.050	105	>69.6k	36.7k	4000K
1.500	85	>81.6k	74.3k	3000K
1.500	105	>60.5k	27.9k	3000K
1.500	120	35.5k	7.8k	3000K
2.000	85	>36.3k	17.5k	3000K

XLamp XP-G3 TM-21 Lifetimes: 350 mA

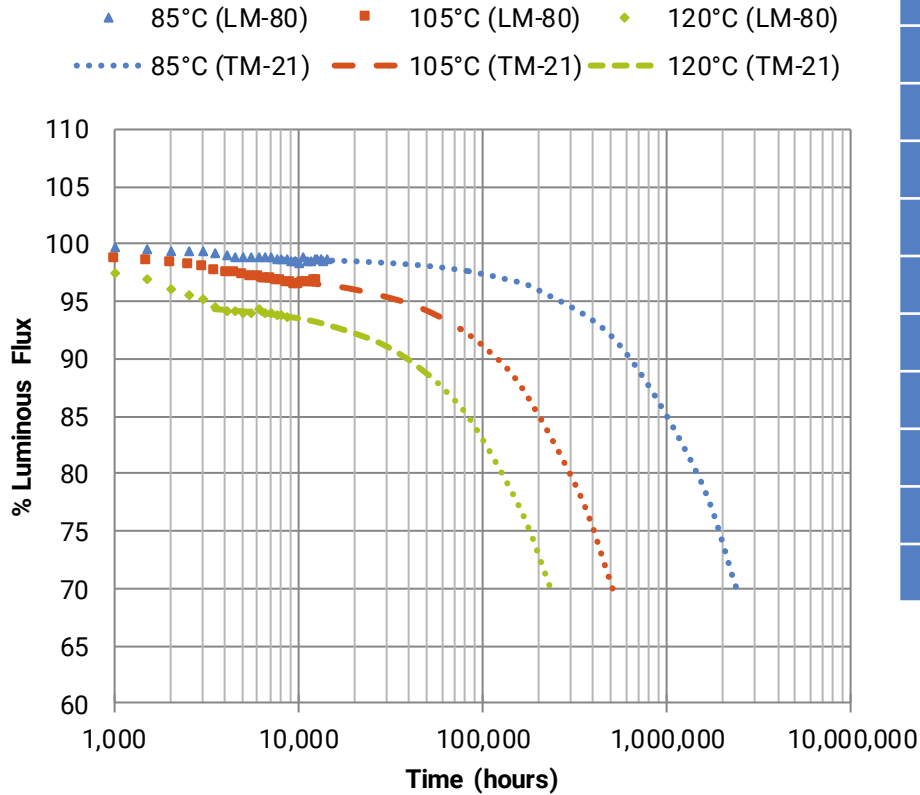


Current	350 mA		
Ta/Tsp	85°C	105°C	120°C
α	-3.289E-07	-2.320E-07	9.406E-07
β	0.9903	0.9748	0.9597
Duration	14,112 hrs	13,608 hrs	8,568 hrs
Calculated L90	$\alpha < 0$	$\alpha < 0$	68,300 hrs
Calculated L80	$\alpha < 0$	$\alpha < 0$	>154,000 hrs
Calculated L70	$\alpha < 0$	$\alpha < 0$	>154,000 hrs
Reported L90	> 84,700 hrs	> 81,600 hrs	> 51,400 hrs
Reported L80	> 84,700 hrs	> 81,600 hrs	> 51,400 hrs
Reported L70	> 84,700 hrs	> 81,600 hrs	> 51,400 hrs

Notes:

- These extrapolations are for informational purposes only and are not a warranty or a specification.
- Extrapolated lifetimes are subject to change without notice.

XLamp XP-G3 TM-21 Lifetimes: 700 mA

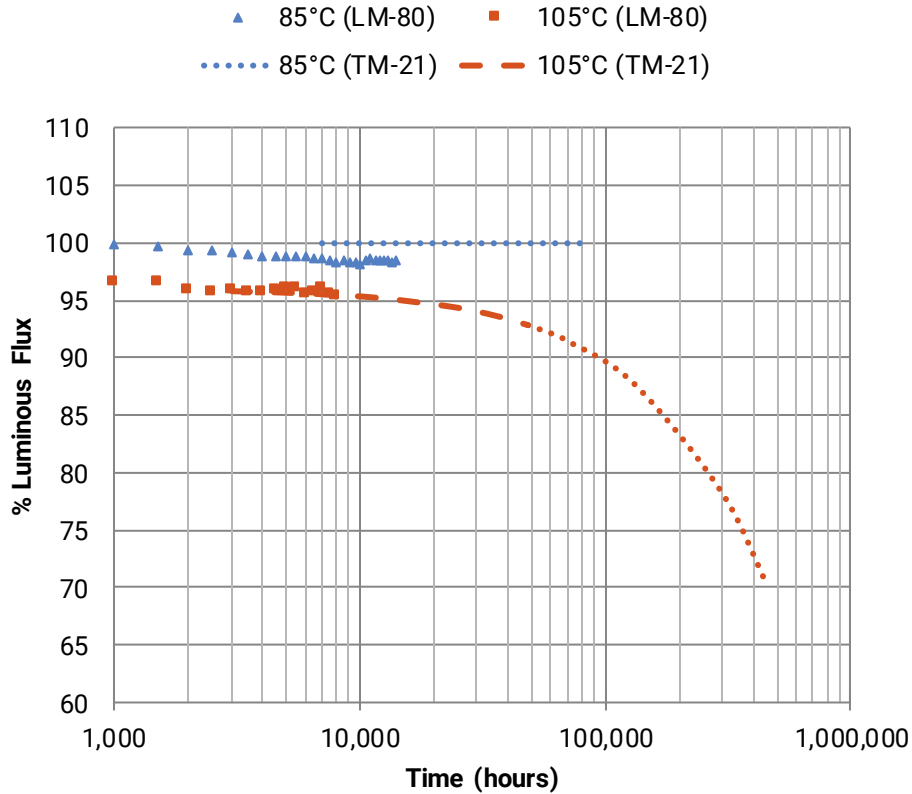


Current	700 mA		
Ta/Tsp	85°C	105°C	120°C
α	1.436E-07	6.492E-07	1.297E-06
β	0.9877	0.9725	0.9474
Duration	14,112 hrs	12,600 hrs	8,568 hrs
Calculated L90	>254,000 hrs	119,000 hrs	39,600 hrs
Calculated L80	>254,000 hrs	>227,000 hrs	130,000 hrs
Calculated L70	>254,000 hrs	>227,000 hrs	>154,000 hrs
Reported L90	> 84,700 hrs	> 75,600 hrs	39,600 hrs
Reported L80	> 84,700 hrs	> 75,600 hrs	> 51,400 hrs
Reported L70	> 84,700 hrs	> 75,600 hrs	> 51,400 hrs

Notes:

- These extrapolations are for informational purposes only and are not a warranty or a specification.
- Extrapolated lifetimes are subject to change without notice.

XLamp XP-G3 TM-21 Lifetimes: 1050 mA

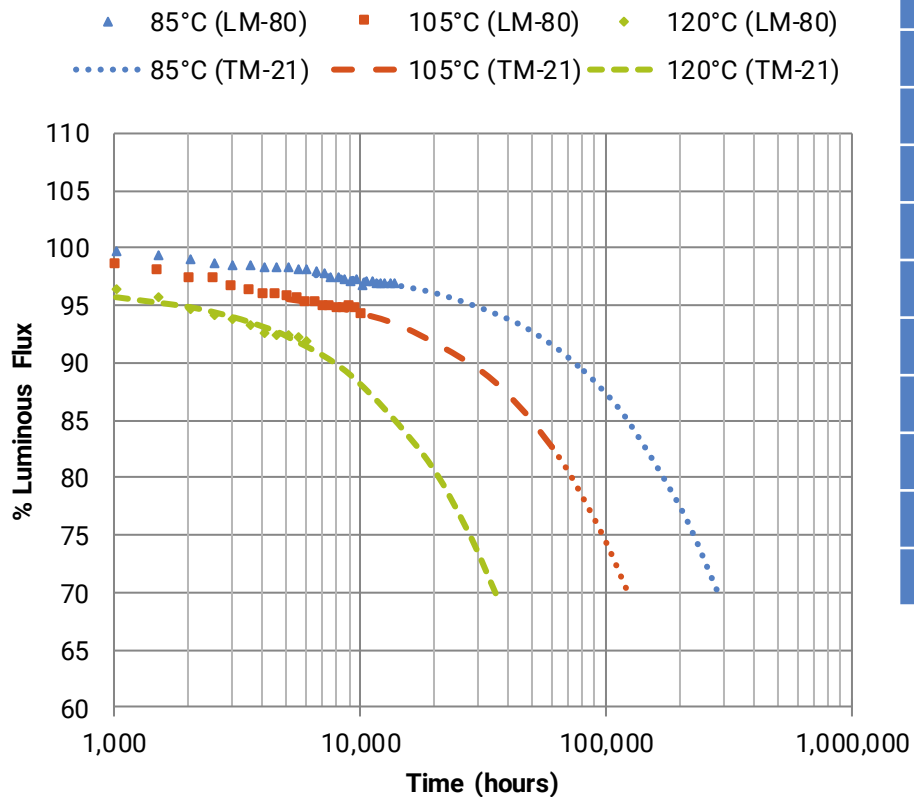


Current	1050 mA	
	85°C	105°C
Ta/Tsp	85°C	105°C
α	-1.666E-08	6.876E-07
β	0.9833	0.9604
Duration	14,112 hrs	8,064 hrs
Calculated L90	$\alpha < 0$	94,400 hrs
Calculated L80	$\alpha < 0$	>145,000 hrs
Calculated L70	$\alpha < 0$	>145,000 hrs
Reported L90	> 84,700 hrs	> 48,400 hrs
Reported L80	> 84,700 hrs	> 48,400 hrs
Reported L70	> 84,700 hrs	> 48,400 hrs

Notes:

- These extrapolations are for informational purposes only and are not a warranty or a specification.
- Extrapolated lifetimes are subject to change without notice.

XLamp XP-G3 TM-21 Lifetimes: 1500 mA

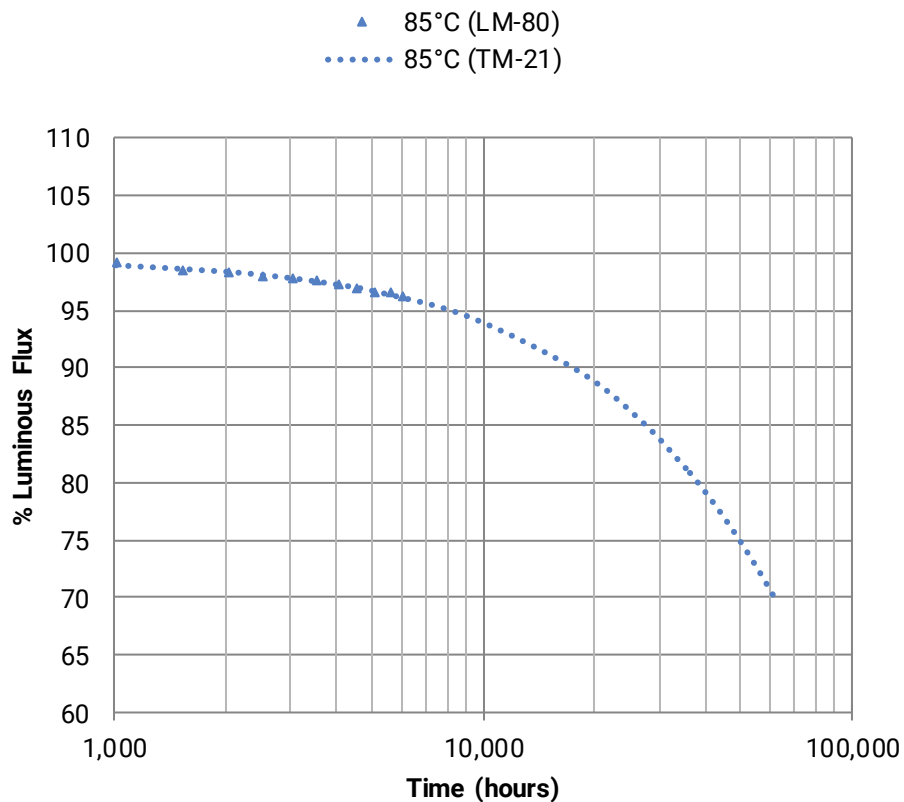


Current	1500 mA		
Ta/Tsp	85°C	105°C	120°C
α	3.114E-06	2.620E-06	9.077E-06
β	0.9992	0.9683	0.9663
Duration	13,608 hrs	10,080 hrs	6,048 hrs
Calculated L90	74,300 hrs	27,900 hrs	7,830 hrs
Calculated L80	173,000 hrs	72,900 hrs	20,800 hrs
Calculated L70	>245,000 hrs	124,000 hrs	35,500 hrs
Reported L90	74,300 hrs	27,900 hrs	7,830 hrs
Reported L80	> 81,600 hrs	> 60,500 hrs	20,800 hrs
Reported L70	> 81,600 hrs	> 60,500 hrs	35,500 hrs

Notes:

- These extrapolations are for informational purposes only and are not a warranty or a specification.
- Extrapolated lifetimes are subject to change without notice.

XLamp XP-G3 TM-21 Lifetime: 2000 mA



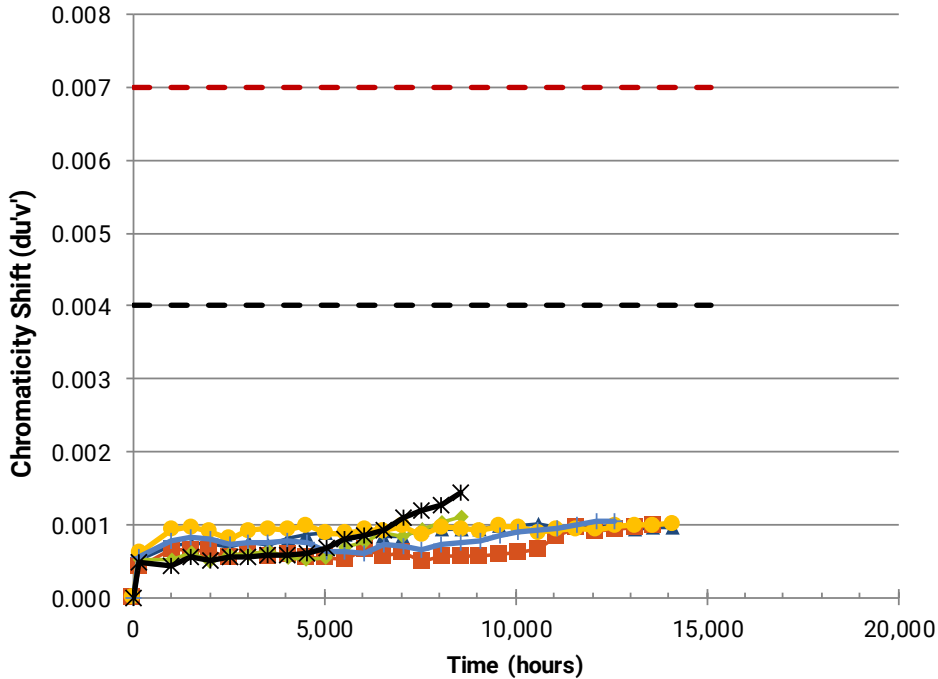
Current	2000 mA
Ta/Tsp	85°C
α	5.713E-06
β	0.9944
Duration	6,048 hrs
Calculated L90	17,500 hrs
Calculated L80	38,100 hrs
Calculated L70	61,500 hrs
Reported L90	17,500 hrs
Reported L80	> 36,300 hrs
Reported L70	> 36,300 hrs

Notes:

- These extrapolations are for informational purposes only and are not a warranty or a specification.
- Extrapolated lifetimes are subject to change without notice.

XLamp XP-G3 LM-80 Color Shift

- XLamp XP-G3 White: If=0.350A, Tsp=85°C
- XLamp XP-G3 White: If=0.350A, Tsp=105°C
- XLamp XP-G3 White: If=0.350A, Tsp=120°C
- XLamp XP-G3 White: If=0.700A, Tsp=85°C
- XLamp XP-G3 White: If=0.700A, Tsp=105°C
- XLamp XP-G3 White: If=0.700A, Tsp=120°C

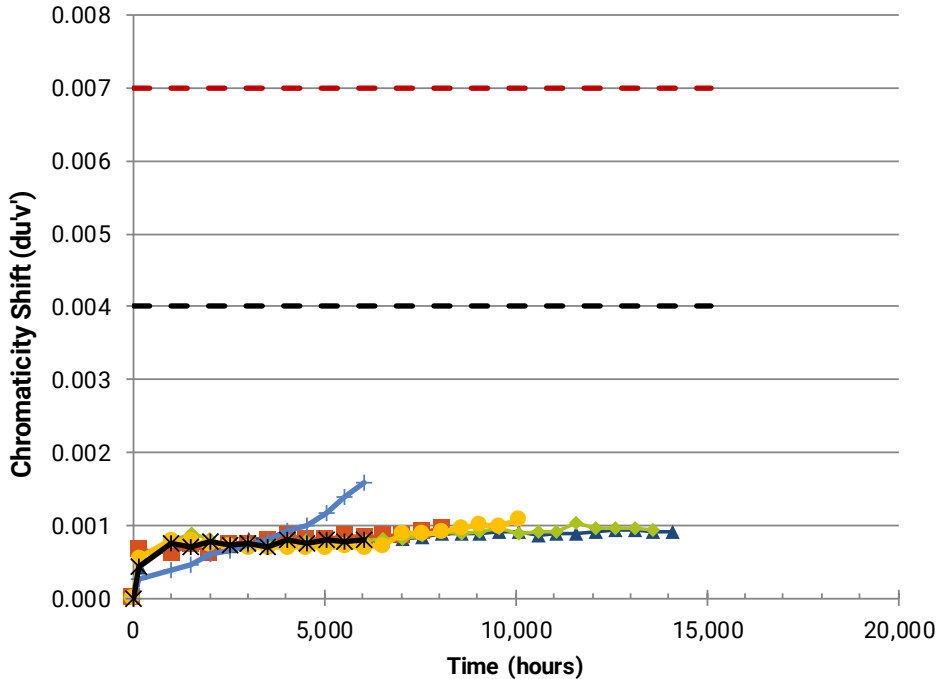


Notes:

- This data is for informational purposes only and is not a warranty or a specification.

XLamp XP-G3 LM-80 Color Shift

- XLamp XP-G3 White: If=1.050A, Tsp=85°C
- XLamp XP-G3 White: If=1.050A, Tsp=105°C
- XLamp XP-G3 White: If=1.500A, Tsp=85°C
- XLamp XP-G3 White: If=1.500A, Tsp=105°C
- XLamp XP-G3 White: If=1.500A, Tsp=120°C
- XLamp XP-G3 White: If=2.000A, Tsp=85°C



Notes:

- This data is for informational purposes only and is not a warranty or a specification.