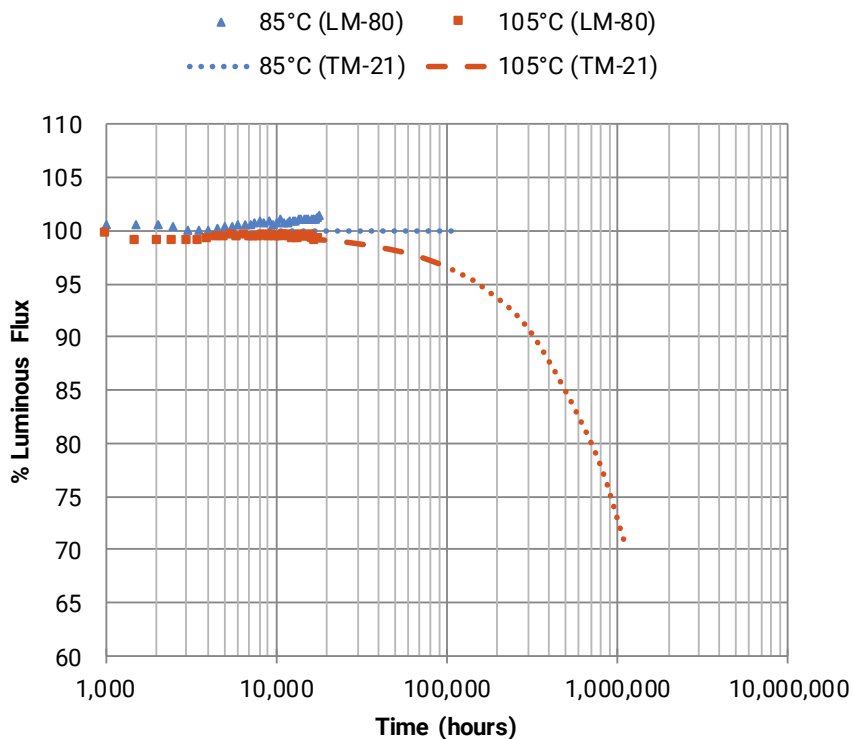




**XLAMP XT-E WHITE**  
LONG TERM TESTING SUMMARY :: Aug 29, 2017

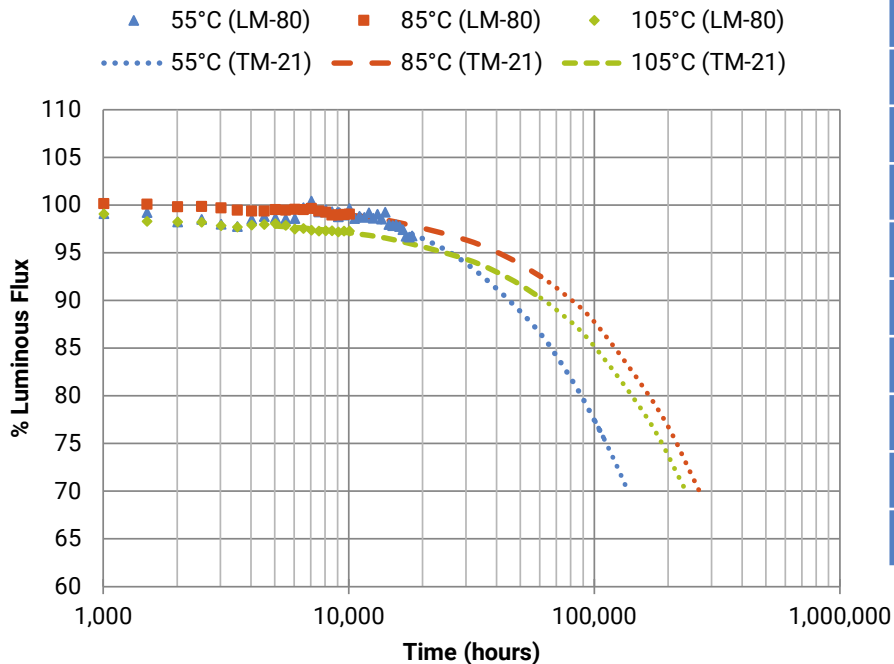
Current (A)	Tsp (°C)	Reported Lifetime (hrs)	
		L70	L90
0.500	85	>109k	>109k
0.500	105	>109k	>109k
1.000	55	>99.8k	45.6k
1.000	85	>60.5k	>60.5k
1.000	105	>60.5k	>60.5k
1.250	55	>60.5k	46.1k
1.250	85	>54.4k	19.3k



Current	500 mA	
Ta/Tsp	85°C	105°C
$\alpha$	-5.314E-07	3.083E-07
$\beta$	1.002	0.9968
Duration	18,144 hrs	18,144 hrs
Calculated L90	$\alpha < 0$	>327,000 hrs
Calculated L80	$\alpha < 0$	>327,000 hrs
Calculated L70	$\alpha < 0$	>327,000 hrs
Reported L90	>109,000 hrs	>109,000 hrs
Reported L80	>109,000 hrs	>109,000 hrs
Reported L70	>109,000 hrs	>109,000 hrs

**Notes:**

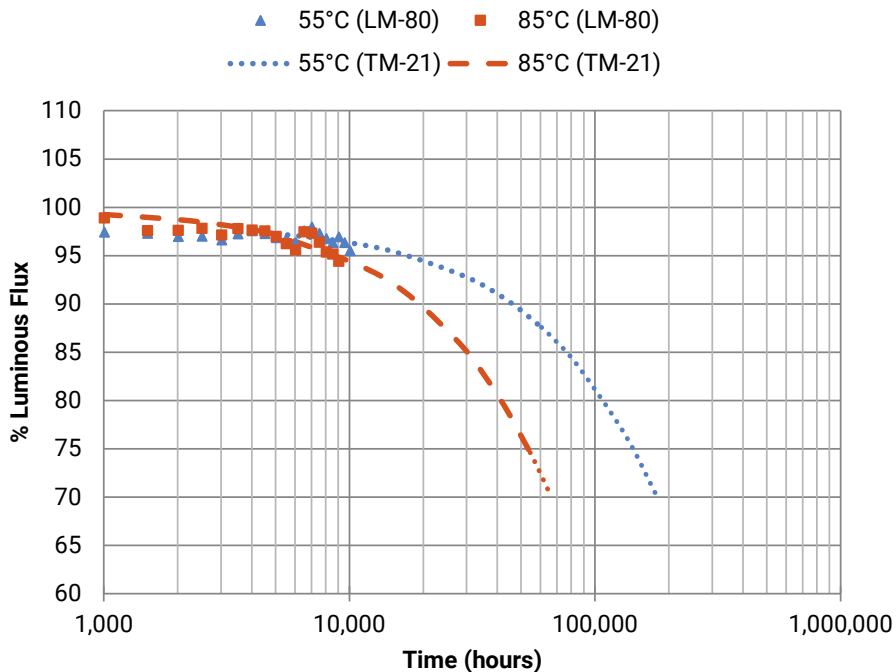
- These extrapolations are for informational purposes only and are not a warranty or a specification.
- Extrapolated lifetimes are subject to change without notice.



Current	1000 mA		
Ta/Tsp	55°C	85°C	105°C
$\alpha$	2.745E-06	1.341E-06	1.448E-06
$\beta$	1.020	1.003	0.9852
Duration	18,144 hrs	10,080 hrs	10,080 hrs
Calculated L90	45,600 hrs	80,800 hrs	62,500 hrs
Calculated L80	88,500 hrs	169,000 hrs	144,000 hrs
Calculated L70	137,000 hrs	>181,000 hrs	>181,000 hrs
Reported L90	<b>45,600 hrs</b>	<b>&gt; 60,500 hrs</b>	<b>&gt; 60,500 hrs</b>
Reported L80	<b>88,500 hrs</b>	<b>&gt; 60,500 hrs</b>	<b>&gt; 60,500 hrs</b>
Reported L70	<b>&gt; 99,800 hrs</b>	<b>&gt; 60,500 hrs</b>	<b>&gt; 60,500 hrs</b>

**Notes:**

- These extrapolations are for informational purposes only and are not a warranty or a specification.
- Extrapolated lifetimes are subject to change without notice.



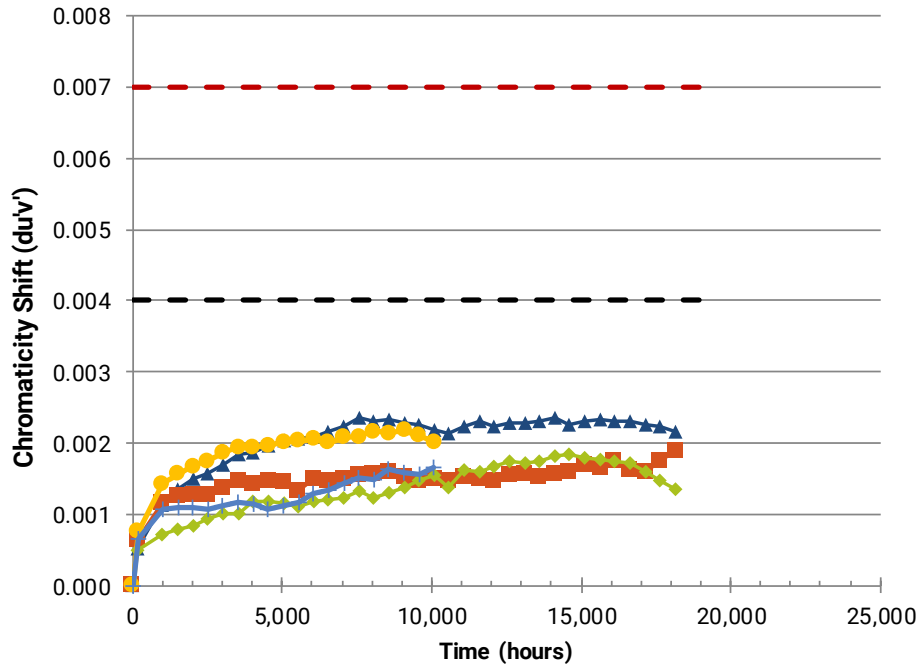
Current	1250 mA	
Ta/Tsp	55°C	85°C
$\alpha$	1.885E-06	5.337E-06
$\beta$	0.9817	0.9977
Duration	10,080 hrs	9,072 hrs
Calculated L90	46,100 hrs	19,300 hrs
Calculated L80	109,000 hrs	41,400 hrs
Calculated L70	179,000 hrs	66,400 hrs
Reported L90	<b>46,100 hrs</b>	<b>19,300 hrs</b>
Reported L80	<b>&gt; 60,500 hrs</b>	<b>41,400 hrs</b>
Reported L70	<b>&gt; 60,500 hrs</b>	<b>&gt; 54,400 hrs</b>

**Notes:**

- These extrapolations are for informational purposes only and are not a warranty or a specification.
- Extrapolated lifetimes are subject to change without notice.

# XLamp XT-E White LM-80 Color Shift

- XLamp XT-E White: If=0.500A, Tsp=85°C
- XLamp XT-E White: If=0.500A, Tsp=105°C
- XLamp XT-E White: If=1.000A, Tsp=55°C
- XLamp XT-E White: If=1.000A, Tsp=85°C
- XLamp XT-E White: If=1.000A, Tsp=105°C
- (none)

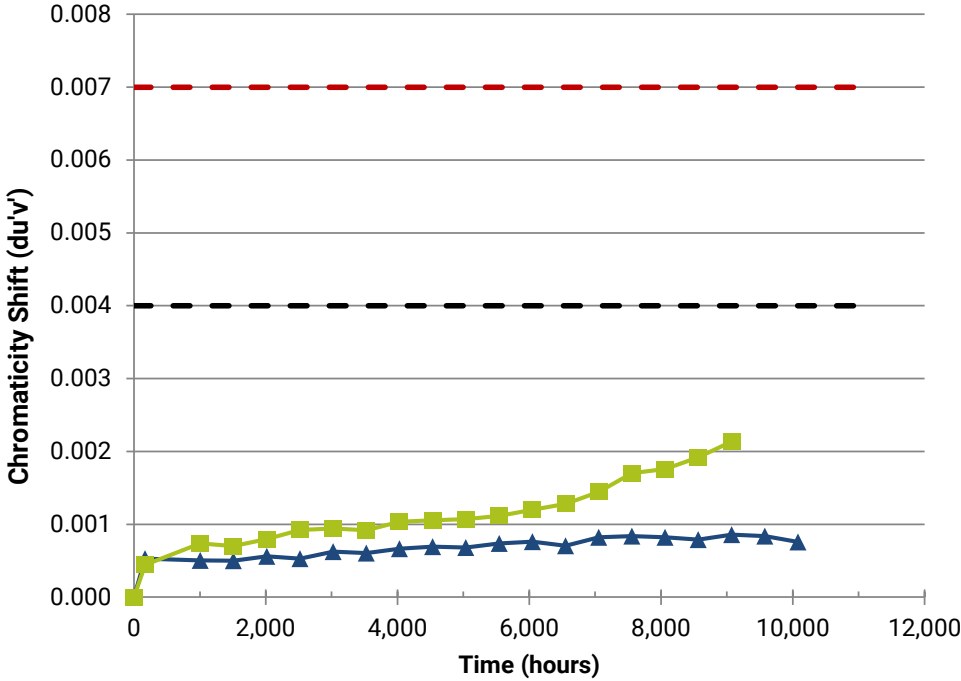


### Notes:

- This data is for informational purposes only and is not a warranty or a specification.

# XLamp XT-E White LM-80 Color Shift

XLamp XT-E White: If=1.250A, Tsp=55°C      XLamp XT-E White: If=1.250A, Tsp=85°C  
(none)      (none)  
(none)      (none)



**Notes:**

- This data is for informational purposes only and is not a warranty or a specification.